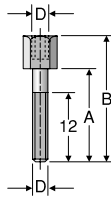


ASB

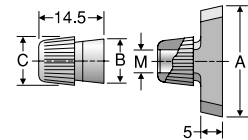
Stacking Bolts



TUBE FITTING PART #	GROUP #	D (mm)	A (mm)	B (mm)	STANDARD FROM STOCK
ASB1X	1	M6 x 1	20	34	•
ASB2X	2	M8 x 1	20	33	•
ASB3X	3	M8 x 1	29	44	•
ASB4X	4	M8 x 1	34	49	•
ASB5X	5	M8 x 1	47	62	•

TMB

Lock Nut

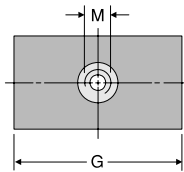


TUBE FITTING PART #	GROUP #	A (mm)	B (mm)	C (mm)	M (mm)	STANDARD FROM STOCK
TMB1/TMAVERZX	1	26	11	12	M6 x 1	•
TMB2X	2-5	26	11	14	M8 x 1	•



APB

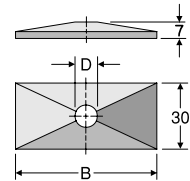
Weld Plate



TUBE FITTING PART #	GROUP #	G (mm)	M (mm)	STANDARD FROM STOCK
APB1X	1	37	M6 x 1	•
APB2X	2	55	M8 x 1	•
APB3X	3	70	M8 x 1	•
APB4X	4	85	M8 x 1	•
APB5X	5	110	M8 x 1	•

DPB

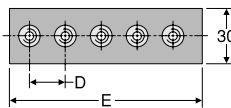
Top Plate



TUBE FITTING PART #	GROUP #	B (mm)	D (mm)	STANDARD FROM STOCK
DPB1X	1	34	6.6	•
DPB2X	2	51	8.6	•
DPB3X	3	64	8.6	•
DPB4X	4	78	8.6	•
DPB5X	5	102	8.6	•

APRB

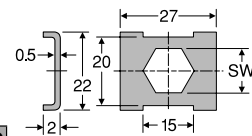
Weld Plate – Strip



TUBE FITTING PART #	GROUP #	D (mm)	E (mm)	STANDARD FROM STOCK
APRB1X	1	40	196	•
APRB2X	2	58	288	•
APRB3X	3	72	358	•
APRB4X	4	90	446	•
APRB5X	5	112	558	•

SBB

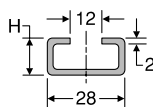
Locking Plate



TUBE FITTING PART #	GROUP #	SW (mm)	STANDARD FROM STOCK
SBB1X	1	11	•
SBB2X	2-5	12	•

TS

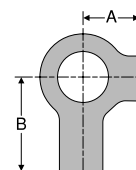
Mounting Rail



TUBE FITTING PART #	GROUP #	B (mm)	H (mm)	LENGTH (meter)	STANDARD FROM STOCK
TS11A/B1X	ALL	28	11	1	•
TS14A/B1X	ALL	28	14	1	•
TS30A/B1X	ALL	28	30	1	•
TS11A/B2X	ALL	28	11	2	•
TS14A/B2X	ALL	28	14	2	•
TS30A/B2X	ALL	28	30	2	•

US

Locking Washer



TUBE FITTING PART #	GROUP #	A (mm)	B (mm)	STANDARD FROM STOCK
USA/USB1XX	1	9	18	•
USB2X	2-5	11	20	•

Dimensions and pressures for reference only, subject to change.